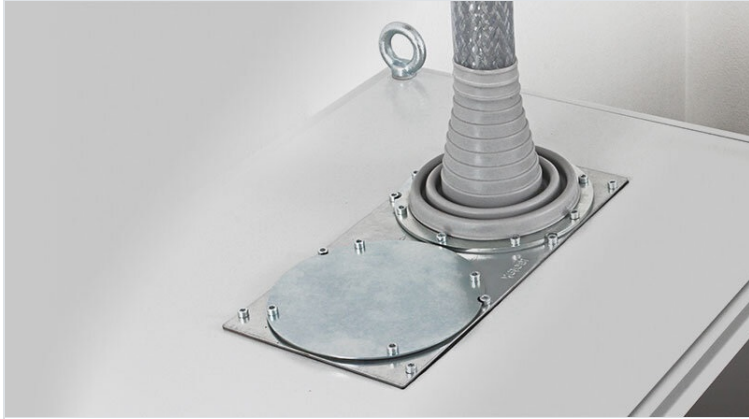


# KEL-ULTRA flex pyramid cable entry grommets

for single cables with diameters up to 115 mm / IP66 / UL Type 12

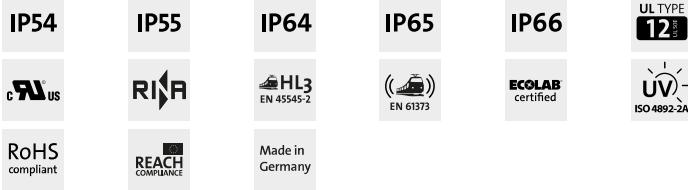


The KEL-ULTRA flex is designed as a cable entry grommet for any large cable or conduit that is difficult to manage. The KEL-ULTRA flex comes in two sizes and is ideal for routing and sealing cables and conduits with a diameter from 25 to 115 mm. Due to the high flexibility of the elastomer pyramid, inserting large, thick cables with KEL-ULTRA flex is easier than using standard cable glands.

After inserting the cable or conduit, the KEL-ULTRA flex is quickly and easily mounted with the metal ring and screws. This ring enables a circular fixing and sealing of the grommet at the enclosure wall. The ring is supplied with each KEL-ULTRA flex.

It is recommended that additional strain relief be provided for cables using cable ties.

**Cutting of grommets:** Cable diameter less 25%. The corresponding diameters are marked on the grommet.



## Specifications

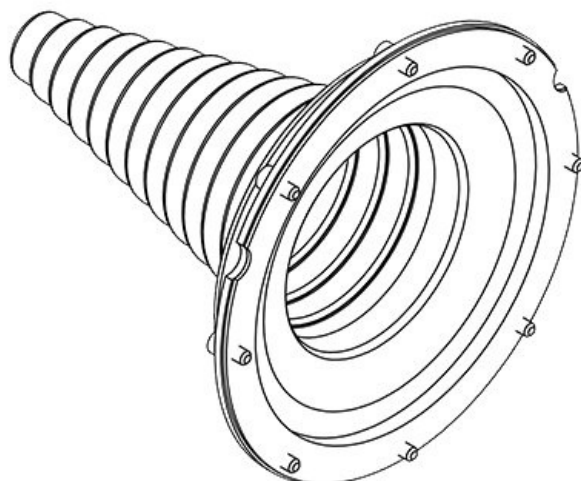
<b>IP rating (EN 60529)</b>	IP54, IP55, IP64, IP65, IP66
<b>UL Type (UL 50E)</b>	UL Type 12
<b>Material</b>	Elastomer Fixing ring: Steel, zinc plated
<b>Flame class</b>	UL94-V0, self-extinguishing
<b>Operating temperature</b>	-40 C° to 100 C°
<b>Properties</b>	silicone free, halogen free
<b>Mounting options</b>	Screw type mounting

## Advantages & benefits

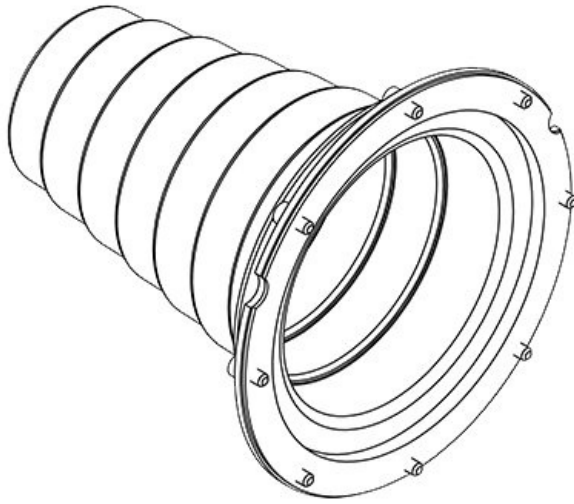
- It is possible to install rigid cables at angles
- Certified protection IP66 (acc. to EN 60529)

## Product types & sizes

KEL-ULTRA flex 1



Part No.	<b>42630</b>	External diameter	<b>168 mm</b>
EAN	<b>4251269309</b>	Cut-out size, round	<b>140 mm</b>
Package quantity	<b>1</b>	No. of screw holes	<b>8</b>
For max. no. of cables	<b>1</b>	Diam. of screw holes	<b>5,5 mm</b>
Max. cable diameter	<b>90 mm</b>	Clamping range	<b>25 - 90 mm</b>
Height	<b>175,5 mm</b>	Clamping range	<b>1 x 25 - 90 mm</b>
Mounting height	<b>175,5 mm</b>		



Part No.	<b>42631</b>	External diameter	<b>168 mm</b>
EAN	<b>4251269309069</b>	Cut-out size, round	<b>140 mm</b>
Package quantity	<b>1</b>	No. of screw holes	<b>8</b>
For max. no. of cables	<b>1</b>	Diam. of screw holes	<b>5,5 mm</b>
Max. cable diameter	<b>115 mm</b>	Clamping range	<b>75 - 115 mm</b>
Height	<b>175,5 mm</b>	Clamping range	<b>1 x 75 - 115 mm</b>
Mounting height	<b>175,5 mm</b>		